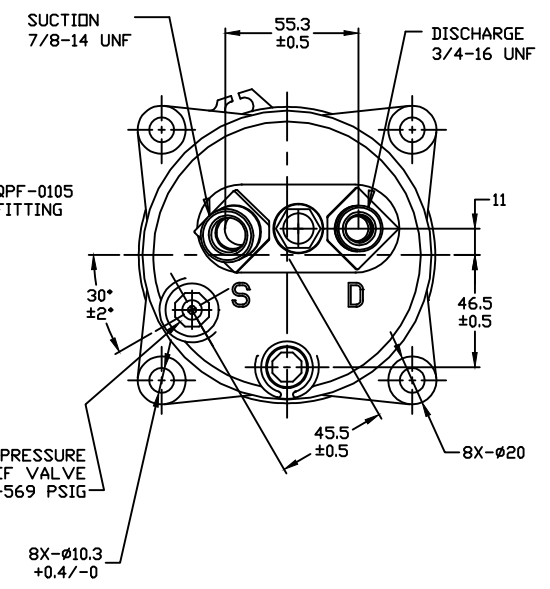
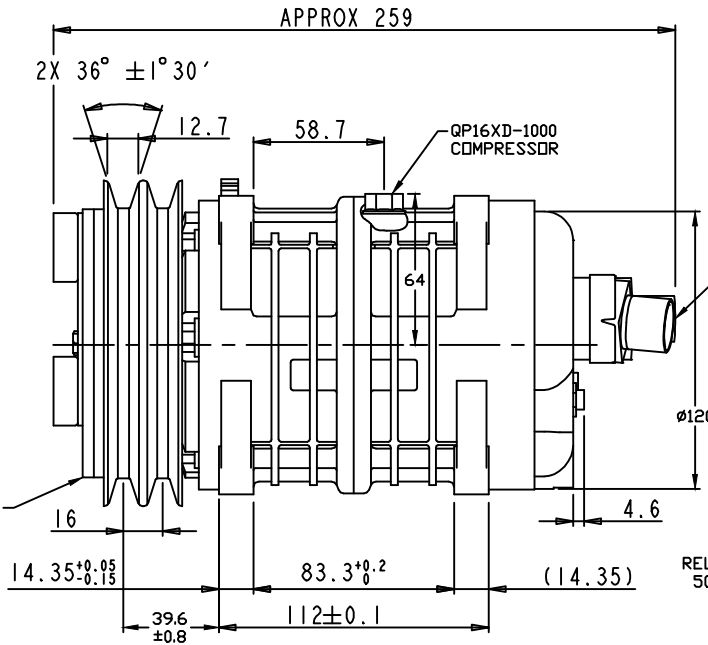
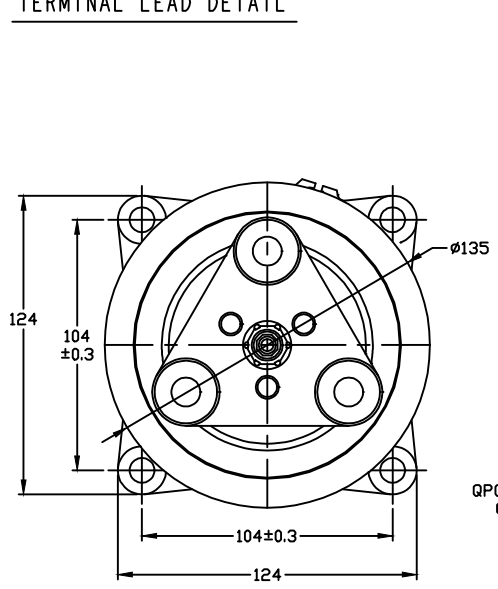
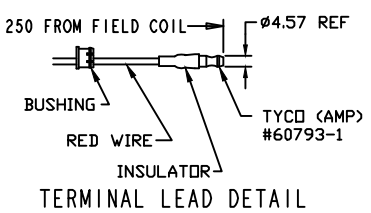


| REVISIONS    |     |             |          |          |
|--------------|-----|-------------|----------|----------|
| CHANGE ORDER | LTR | DESCRIPTION | DATE     | APPROVED |
| RM           | 0   | RELEASED    | 03/20/14 |          |



- CLUTCH SPECIFICATIONS:**
- VOLTAGE.....12 VDC
  - BELT.....A2
  - STATIC TORQUE  
INITIAL.....35 Nm (3.5 Kgfm)  
AFTER BURNISHING.....49 Nm (5 Kgfm)
  - MAX POWER CONSUMPTION.....45W @ 25°C
  - ROTATION DIRECTION.....CW OR CCW
  - WEIGHT.....2.5 Kg

- COMPRESSOR SPECIFICATIONS:**
- MODEL.....QP16HD
  - NUMBER OF CYLINDERS.....6
  - BORE X STROKE.....36 X 26.7 mm
  - DISPLACEMENT.....162.9 cm<sup>3</sup>/REV
  - SPEED RANGE.....700 - 6000 RPM
  - ROTATION DIRECTION.....CW OR CCW
  - REFRIGERANT.....R-134a or R-404a
  - LUBRICANT.....NO OIL -SHIP DRY-
  - WEIGHT.....4.8 Kg

|   |   |                  |
|---|---|------------------|
| UNLESS OTHERWISE SPECIFIED DIMENSIONS ARE IN MM. INTERPRET DIM AND TOL PER ASME Y14.5M - 1994 | CAD GENERATED DRAWING. DO NOT MANUALLY UPDATE |                  |
|   | DRAWN<br>GLB                                  | DATE<br>03/20/14 |
| THIRD ANGLE PROJECTION  | CHECKED                                       |                  |
|   | APPROVED                                      |                  |
| FINISH  | ENG APPVL                                     |                  |

|   |               |  |  |
|---|---------------|--|--|
|   |               | MANUFACTURING, L.L.C.<br>DECATUR, ILLINOIS USA |  |
| TITLE<br>COMPRESSOR ASSEMBLY<br>QP16HD H-3/4 7/8 -NO OIL-<br>A2 135mm 12V 3-EYE |               |  |  |
| SIZE<br>A   | CODE IDENT NO | DWG NO - REV<br>QP16XD-1999_0                  |  |
| SCALE: NONE   |               | SHEET 1 OF 1                                   |  |