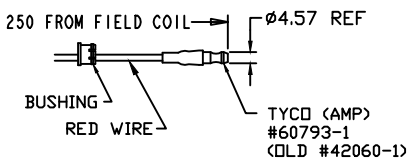
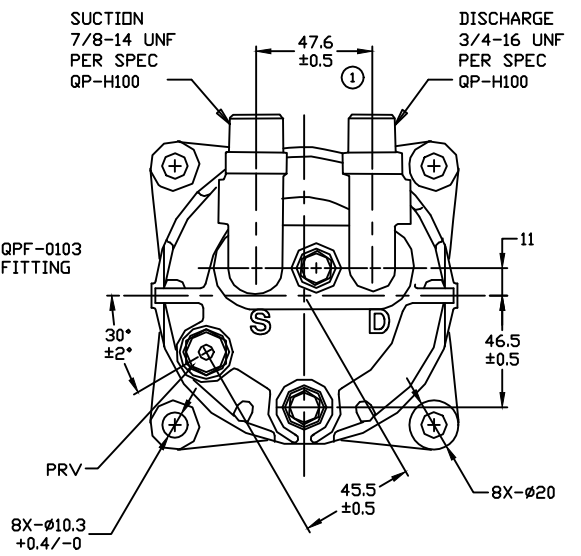
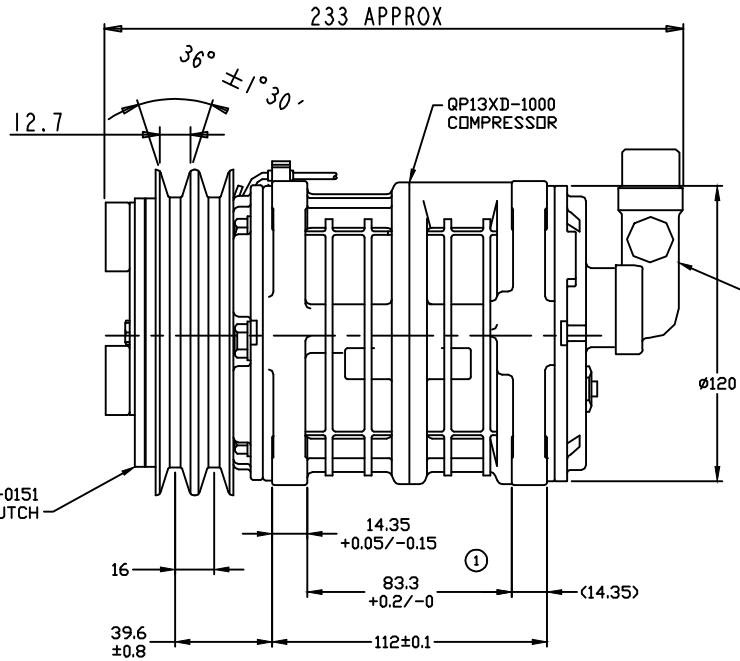
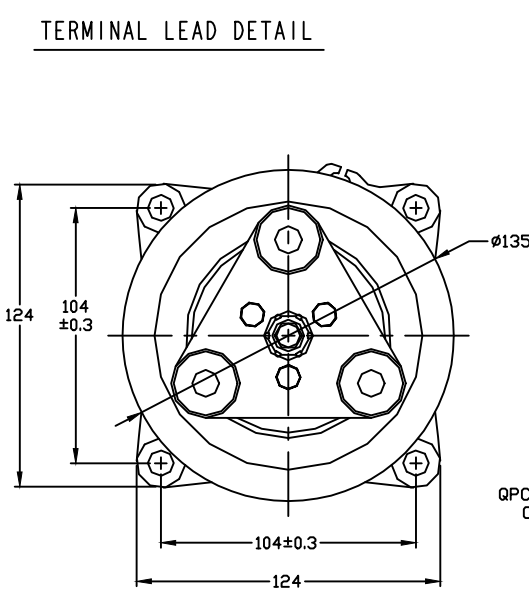


REVISIONS				
CHANGE ORDER	LTR	DESCRIPTION	DATE	APPROVED
Q12024	1	47.6 WAS 47.7, ADDED TOLERANCES	02/05/13	



TERMINAL LEAD DETAIL



- CLUTCH SPECIFICATIONS:**
- VOLTAGE..... 12 VDC
 - BELT..... A2
 - STATIC TORQUE
INITIAL..... 35 Nm (3.5 Kgf)
AFTER BURNISHING..... 49 Nm (5 Kgf)
 - MAX POWER CONSUMPTION..... 45W @ 25°C
 - ROTATION DIRECTION..... CW OR CCW
 - WEIGHT..... 2.25 Kg

1) NO DIODE IN CLUTCH COIL

- COMPRESSOR SPECIFICATIONS:**
- MODEL..... QP13HD
 - NUMBER OF CYLINDERS..... 6
 - BORE X STROKE..... 36 X 21.4 mm
 - DISPLACEMENT..... 131 cm³/REV
 - SPEED RANGE..... 700 - 6000 RPM
 - ROTATION DIRECTION..... CW OR CCW
 - REFRIGERANT..... R-134a or R-404a
 - LUBRICANT..... NO OIL -SHIP DRY-
 - WEIGHT..... 4.5 Kg

UNLESS OTHERWISE SPECIFIED DIMENSIONS ARE IN MM. INTERPRET DIM AND TOL PER ASME Y14.5M - 1994	CAD GENERATED DRAWING, DO NOT MANUALLY UPDATE	
	DRAWN GLB	DATE 04/14/11
THIRD ANGLE PROJECTION	CHECKED	
	APPROVED	
FINISH	ENG APPVL	

QUE PRODUCTS, LLC
DECATUR, ILLINOIS USA

TITLE
COMPRESSOR ASSEMBLY
QP13HD V-3/4 7/8 -NO OIL-
A2 135mm 12V 3-EYE

SIZE A CODE IDENT NO DWG NO - REV
QP13XD-1233_1

SCALE NONE SHEET 1 OF 1